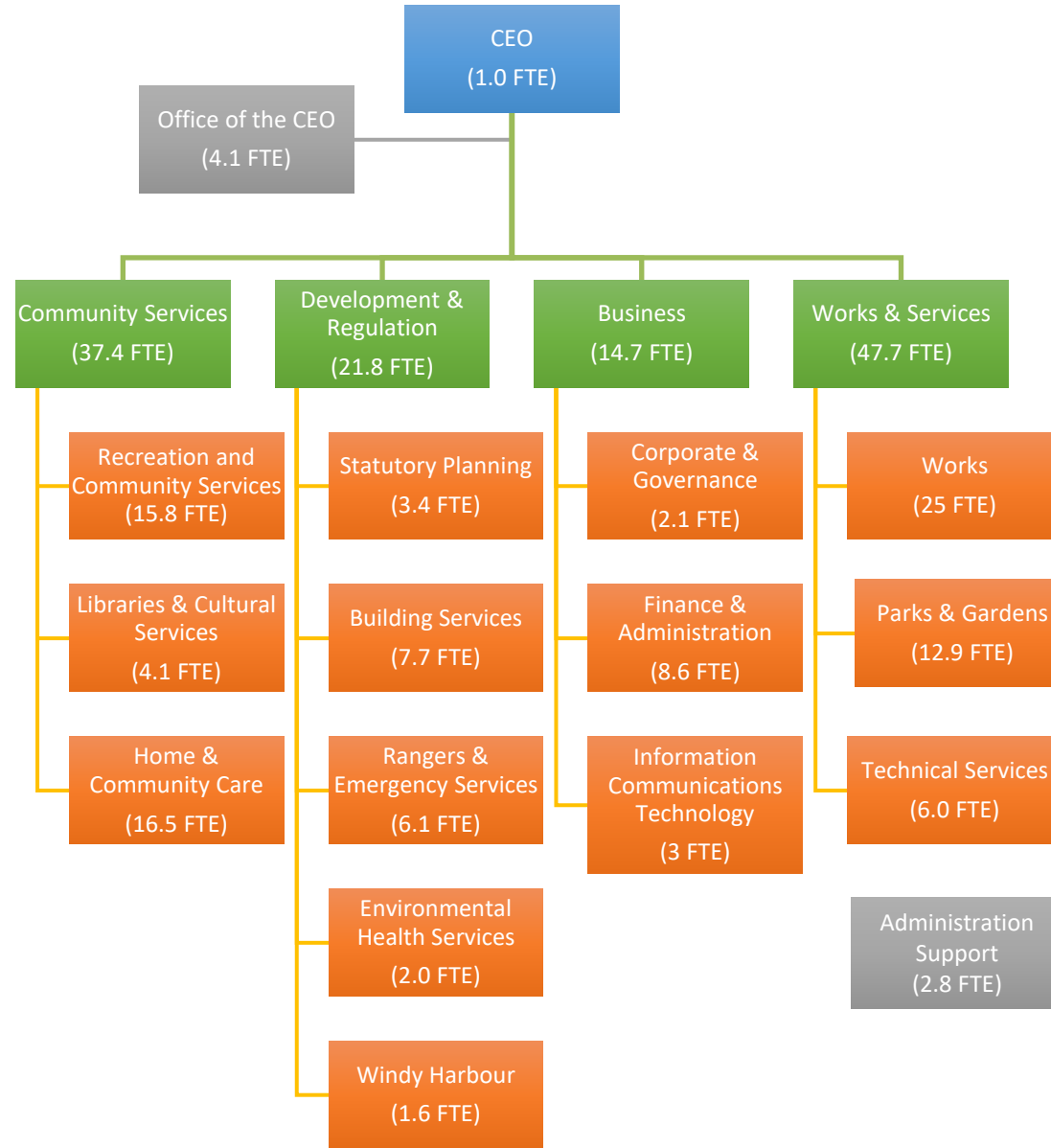




**Shire Total Employees – 126.7 FTE**  
**Grant funded – 19.6 FTE**  
**Municipal funded – 107.1 FTE**

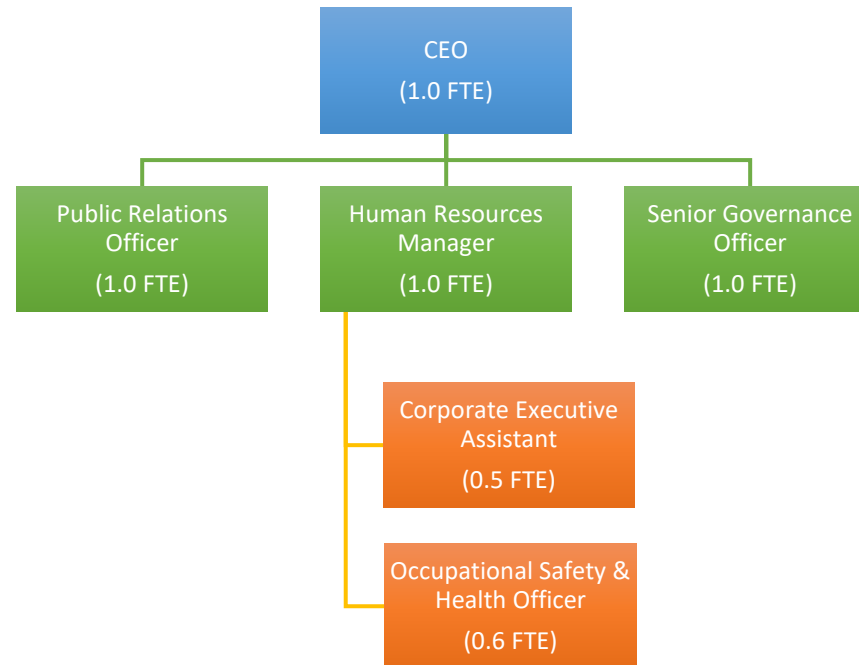
**Directorates**

**Departments**



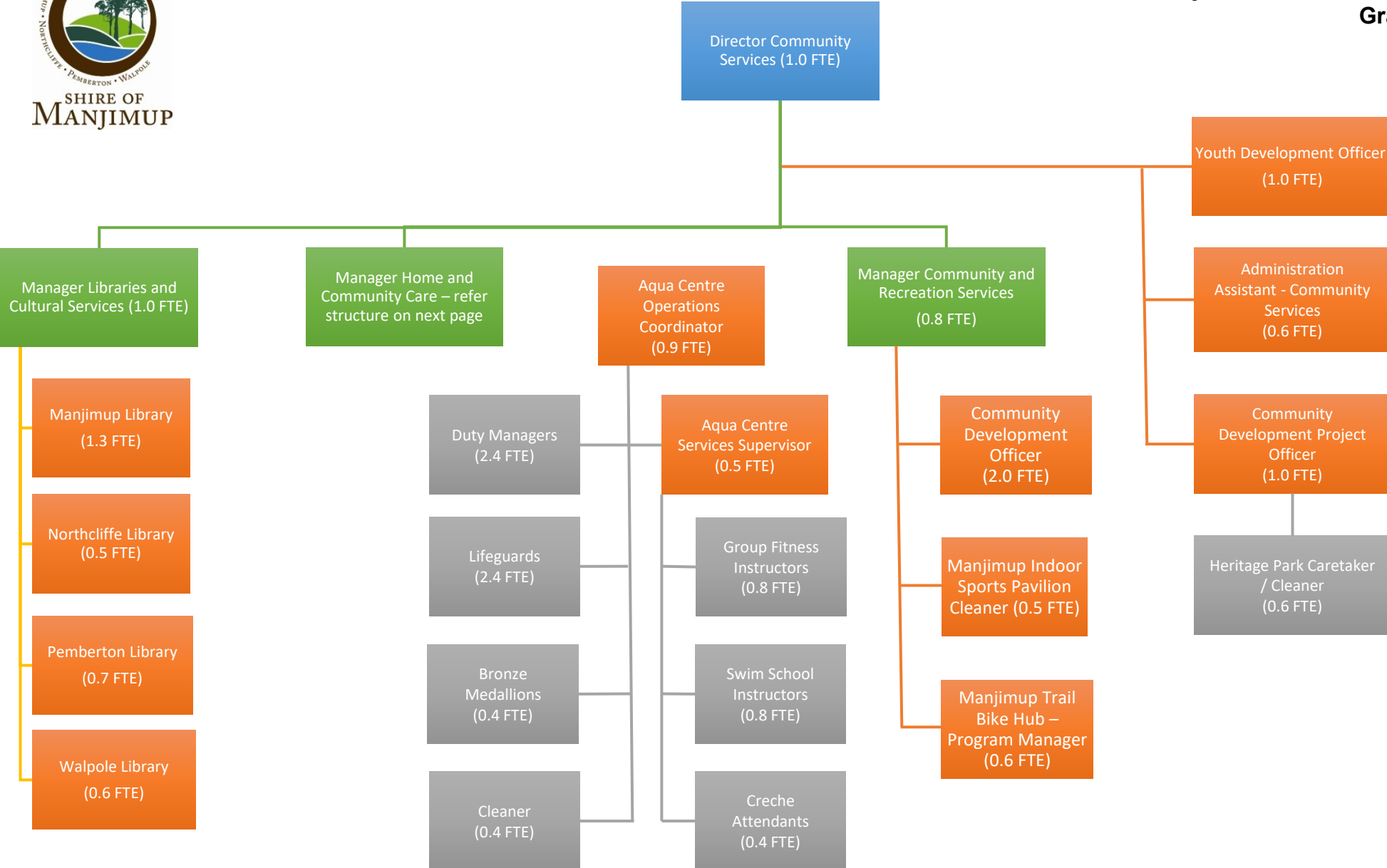


**Office of the CEO Total (5.1 FTE)  
Grant funded (0 FTE)**



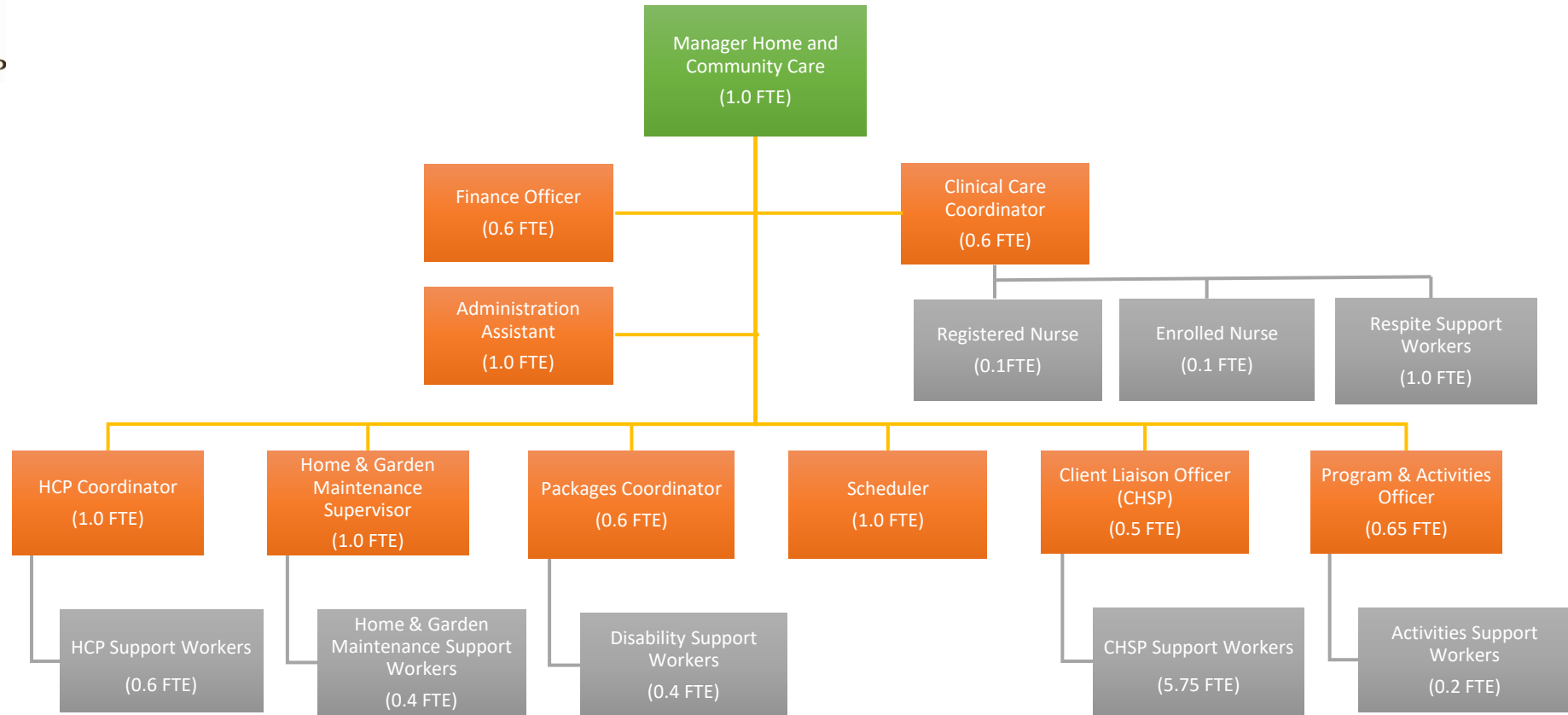


**Community Services Directorate Total (20.9 FTE)  
Grant funded (1.6 FTE)**



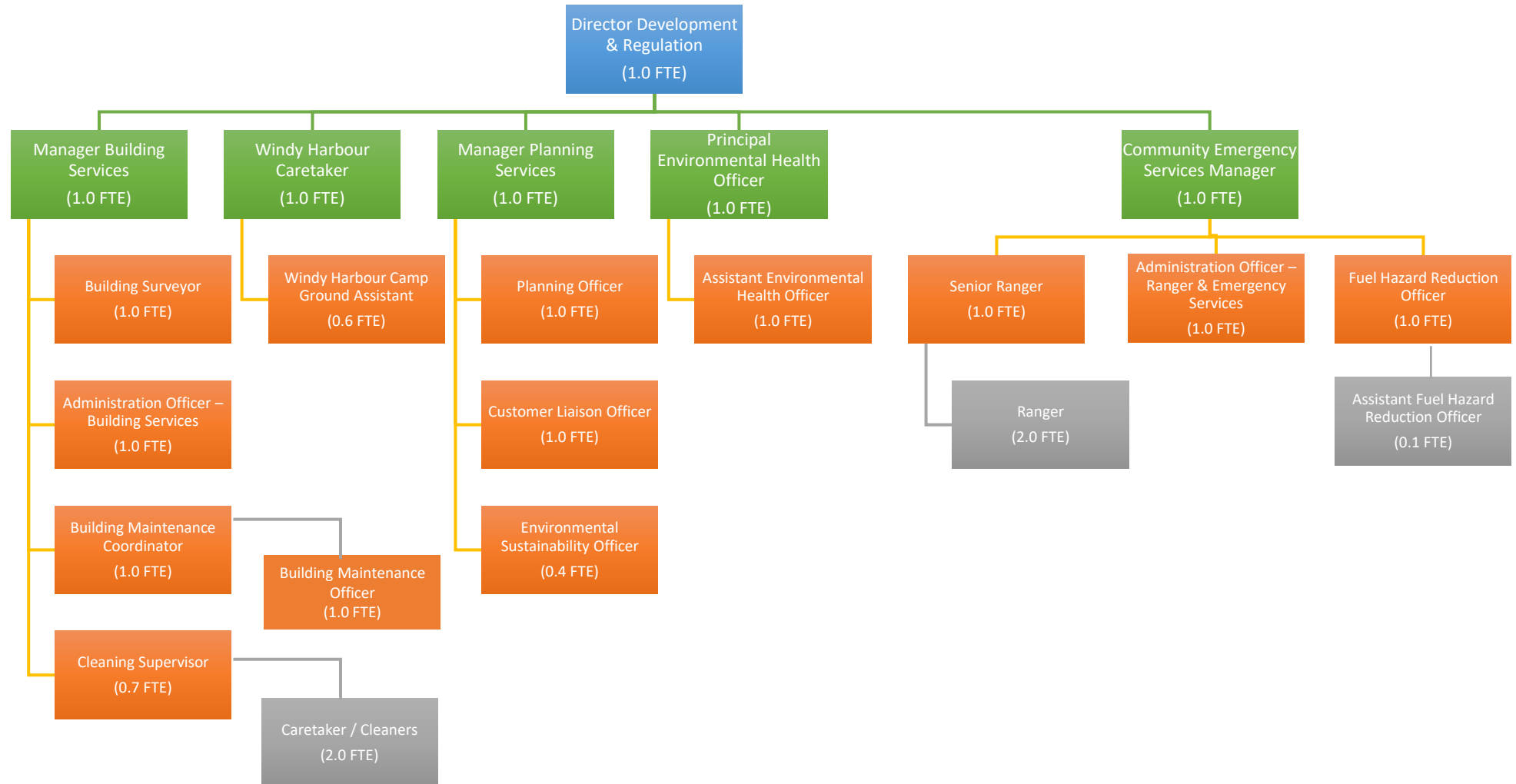


**Community Services Directorate Total (16.5 FTE)  
Grant funded (16.5 FTE)**



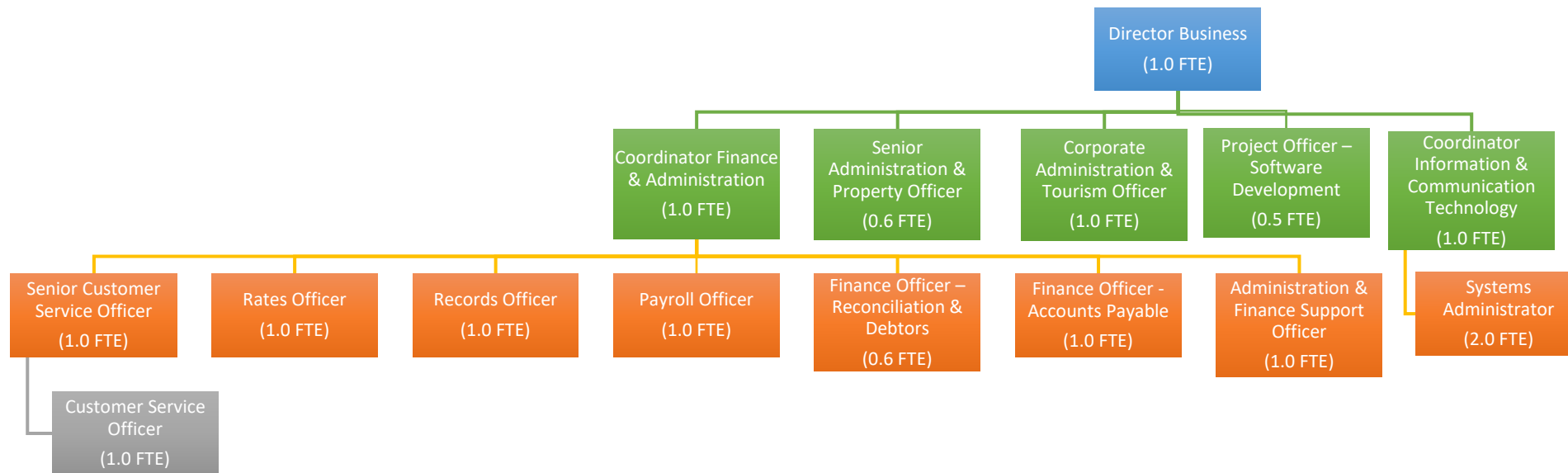


**Development & Regulation Directorate Total (21.8 FTE)  
Grant funded (0.5 FTE)**





**Business Directorate Total (14.7 FTE)**  
**Grant funded (0 FTE)**





**Works & Services Directorate (47.7 FTE)**  
**Grant funded (1.0 FTE)**

